

About NASA India



The National Association of Students of Architecture (NASA, India) is the world's largest architectural student-run organization. Founded in 1957 with just seven colleges, it has grown to include over 350+ colleges and more than 66,000+ students, making it a significant voice for architecture students across India. The association aims to provide a platform for learning and interaction among students from diverse cultural backgrounds.

NASA India functions as a non-profit and non-political organization. It is officially registered under the Societies Act of 1860, with its headquarters at the Department of Architecture, School of Planning and Architecture in New Delhi.

NASA India organizes various events, programs, and competitions throughout the year. These include partnerships with organizations like HUDCO, GRIHA, and CPK for design trophies. There are 11 design trophies in total, with the Annual NASA Design Competition being the flagship trophy and offering students a platform to showcase their creative talents and design innovations. We have partnered with the Council of Architecture, India, for the Student of the Year trophy as well.

The association's flagship event is the Annual NASA Convention (ANC), the world's largest gathering of student architects. This event attracts over 4000+ students participating in workshops, masterclasses, and programs led by more than 200 esteemed architects. Additionally, there are regional Zonal NASA Conventions held annually.

NASA India's initiatives extend beyond traditional academics. The summer-winter school programs offer immersive experiences that enhance students' practical skills and broaden their educational horizons. The "Insider" initiative allows students to engage directly with experienced architects, gaining insights into office management and professional practice. This interaction fosters mentorship and provides valuable guidance. The Louis I Kahn Documentation series aims to preserve and disseminate architectural knowledge by documenting significant but often overlooked sites.

NASA India hosts programs both nationally and internationally, in countries like Japan, Sri Lanka, the USA, and South Korea. These experiences provide students with enriching learning opportunities and enhance their networking capabilities.

The NEXUS is an informal meeting ground where students can form bonds, share ideas, and collaborate. It emphasizes learning, mentoring, and networking, allowing students to showcase their talents and develop new ideas with peers from around the globe. We have also expanded into podcasts with our Spotify exclusive, The Archade.

For more information, you can visit NASA India's website - <https://www.nasaindia.co/>
Our social media pages are [@wenasaindia](#) and [@mynasaindia](#) on Instagram.



Catalyse - Our Annual Theme

For nearly seven decades, NASA India has stood as a movement - built by students & led by students. As we step into the 68th year of our association's existence, I call upon the stakeholders to honour the legacy not by looking back, but by asking what we can spark next.

NASA India has always been more than just an association. It's been a force: a surge of youthful energy, ideas, voices, and action. This year, we recognise and compound over the force for what it truly is.

In the grand reaction of change, whether in our built environments, our learning systems, or the profession itself, we, the students, are the accelerators. With over 66,000 students across the country, our numbers are not just statistics. They are the untapped potential of a generation ready to shape what's next. This year, we reflect on the immense power of coming together - not just to participate, but to instigate. A catalyst doesn't wait for change. It creates movement, breaks inertia, and opens new paths. **NASA India today stands not just as a platform for learning and collaboration, but as an agent of impact - nationally & globally.** One that ignites bold conversations, challenges outdated practices, and pushes the profession toward more inclusive, ethical, and relevant futures.

So what does it mean to catalyse?

It means taking responsibility.

It means using architecture as a lens to rethink society, equity, and the future.

It means challenging what no longer serves us.

It means questioning the boundaries of architecture and expanding its purpose.

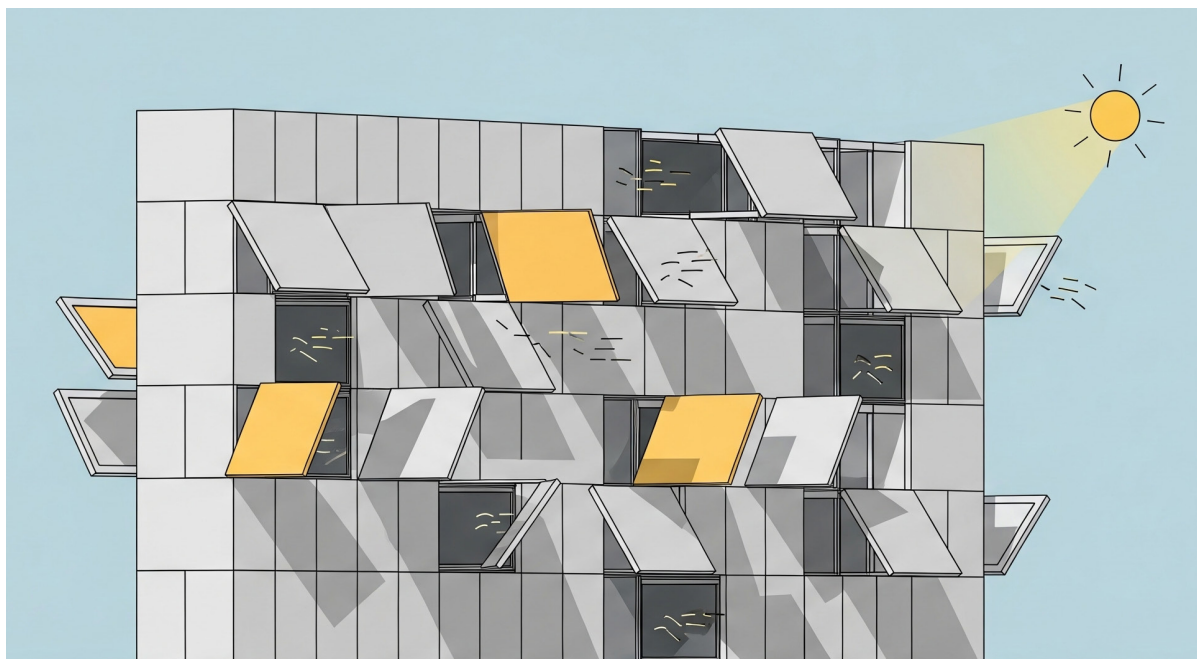
This is a call to all students, designers, thinkers, makers, rebels:
Catalyse conversations, communities & the future.

Because this is our moment in the reaction.
Let's use it to spark something irreversible.

Come, let's **CATALYSE** the reaction that serves the greater good!

Introduction

In the face of intensifying climate events, rising temperatures, erratic rainfall, flooding, and water scarcity, architecture must evolve. The environments we build in are no longer predictable, and so the architecture we propose must be responsive, adaptive, and alive to change. It often makes one wonder, when external factors are so unpredictable and ever-changing, why architectural solutions remain static in nature. Imagine buildings that tilt toward the sun, open to let air through, or fold to create shade. Imagine water being used to cool a space, or a structure that lifts when floodwaters rise. These are not futuristic ideas; they are design problems to be solved with real materials, simple mechanics, and architectural clarity. In this competition, we invite participants to come up with ideas where the building is no more static and has a kinetic response to the outside changing conditions. The outcome should serve society by creating a symbiotic relationship with the environment, where the building and climate respond to one another in balance, while ensuring low energy consumption through the use of natural forces such as gravity, wind, pressure, human effort, solar energy, rain, and other natural phenomena.



An abstract graphic featuring a large orange shape with a jagged top and a smooth bottom, resembling a stylized mountain or a task. A thin orange line winds around the shape, with small orange and brown geometric shapes (triangles, rectangles) scattered along it. Several small orange figures are positioned on the line, appearing to be climbing or navigating the path. The text "The Task" is centered within the orange shape.

The Task

Design Brief

Participants are required to design a non-residential building, prototype, or installation that responds kinetically to environmental conditions. The proposal should clearly demonstrate how movement becomes integral to the architectural system, enhancing spatial performance and environmental responsiveness.

Site Parameters

- **Location:** To be selected by participants.
- **Project Type:** Non-residential
- **Site Area:** 4000 sq.m.
- **F.A.R.:** 4
- **Ground Coverage:** Maximum 40%
- **Height & Setbacks:** As per applicable local byelaws.



Guidelines

An abstract illustration featuring a winding orange path that meanders across the page. Several stylized human figures in orange and brown are positioned along the path, appearing to walk or run. The path is bordered by large, rounded orange shapes that resemble hills or architectural forms. Scattered around the path are various geometric shapes, including triangles and rectangles, in shades of orange and brown. The overall style is minimalist and modern.

Jury Criteria

- The jury will value innovative **kinetic solutions** that address urban challenges with social and ecological responsiveness.
- Emphasis will be on creative design thinking that promotes interaction, inclusivity, and sustainability in compact contexts.
- Designs must clearly communicate their ideas, showing potential for positive social and environmental impact.

Submission Requirements

- Limit the presentation to a **maximum of 2 A1 sheets**.
- Write a **detailed design concept narrative (maximum 300 words)** that clearly conveys the idea, intent, and overall vision of the proposal.
- Describe the environmental context by highlighting the site conditions, climate, surroundings, and ecological considerations that influence the design.
- Illustrate the exploded or sectional detail of the key kinetic system to explain its components, working mechanism, and integration within the design.
- Present sequence diagrams that depict the step-by-step transformation of the design over time.
- **Animation (Optional):** include an animation in the form of a GIF or short video to visually communicate the dynamic aspects of the design. (through QR Code or by including a link in the sheets)
- Maintain clarity and coherence in your presentation, ensuring that your message is easily understandable regardless of the chosen format.
- **NOTE: File size must not exceed 25 MB**

Sheet & NASA India Logo Guidelines

Failing to comply with any of the guidelines may lead to disqualification at the discretion of the executive council.

- NASA India Internal Logo shall always be placed on the right-hand bottom corner of the sheet.
- Sheet Template to be followed is available in the drive link - <https://drive.google.com/drive/folders/101O6GXMeEdD1hvCCco5jaCOtc1McW1T?usp=sharing>
- NASA India logo should not be merged, overlapped etc. with any sort of text, graphic, image, etc.
- NASA India logo should be in true black with a perfectly white background.



General Submission Guidelines

- All text should be in English.
- The projects should use the decimal metric system and contain a metric graphic scale in order to enable publication in reduced formats.
- The format of the sheets should clearly mention the name of the trophy followed by the year i.e. "CPK Trophy 2025-26"
- The format of the sheet should contain a square box of 25mm x 25mm at the bottom right-hand corner, next to the NASA India logo which should have the unique registration number allotted to the participants after registrations.
- 10MM White margin is to be left on all sides of A1 sheets.
- The scale is left to the discretion of the participant(s) to the condition that the scale should be in metric system and all the drawings should be clear and legible.
- Manually rendered entry should be scanned at least in 300 x 300dpi (dots per Inch) resolution.
- The soft copy (non-editable format) of the sheets along with authentication letter, declaration letter and any other required documents prescribed in the submission requirements should be uploaded on the website by the submission deadline.
- The soft copy file of the sheets should not be corrupted or incomplete or in low resolution.
- It is mandatory to produce the original copy of the Authentication Letter for each entry (entry code should be mentioned if allotted) with the name of participant(s) and stating the unit will abide by whatever may be the final results and also agree that this entry is a property of both the institute and NASA India.
- The Authentication Letter should be signed by the HOD/Principal/Director of the unit.
- It is mandatory for the colleges to produce the original copy of the Declaration Letter for each entry (entry code should be mentioned if allotted) signed by the participants stating the work submitted is genuine and they have endorsed copy- rights for the same and to adhere by all the rules and regulations, jury process and the results.
- **Authetication & Declaration formats to be followed are available in the drive link - <https://drive.google.com/drive/folders/1mschiSd0GIM4gjzg5914bdkUi54ZzluS?usp=sharing>**
- The Prize Money Authenticating Letter signed by the Director/ Principal / HOD in the college letterhead specifying the account details (Account Name, Account Number, Bank Name, IFSC Code) in which the money is to be credited for each entry (entry code should be mentioned if allotted) shall be collected at a later stage.
- The working files in editable formats of the Shortlisted Entries should be submitted to the Council, failing which, the submission requirements would be deemed incomplete leading to the prize money being withheld.
- Shortlisted Entries with manual hand-done sheets should submit high quality scan (min.300 x 300 dpi) along with the content in a word document of the shortlisted entries should be submitted to the Council, failing which, the submission requirements would be deemed incomplete leading to the prize money being withheld.

Important Information

- **Maximum (3) participants Per Entry** for C.P. Kukreja Trophy.
- **A participant can submit only one entry, whether as part of a group or individually** for C.P. Kukreja Trophy.
- Registration, queries, and submission shall be through the website only <https://www.nasaindia.co/Trophy?groupid=2#>
- Registration of the trophies will be final and cannot be changed or withdrawn henceforth.
- Late Registration and submission will not be entertained and henceforth the defaulters shall be disqualified.

Important Dates



Release of Brief:

10th September 2025, Wednesday

Registration Deadline:

30th September 2025, Tuesday 1800 Hrs IST

Queries Deadline:

30th September 2025, Tuesday 1800 Hrs IST

Submission Deadline:

1st November 2025, Saturday 1800 Hrs IST



Prize money of **1 Lakh**
INR/973.33 Euros/1,133.91
US Dollars is allotted

- In addition to the prize money, the top three winners will be offered an **internship at CP Kukreja Architects**. Please note that if the first-place entry comprises three participants, the internship opportunity will be extended to them collectively, and not to the participants of the second and third winning entries.
- Winners will receive a distinguished **Recognition Letter from RIBA**, enhancing their academic and professional prospects.

Prize Money



Moderator

CP Kukreja Foundation for Design Excellence

The CP Kukreja Foundation for Design Excellence is dedicated to nurturing Indian design values and empowering the next generation of professionals. Named after the

prolific architect, C.P. Kukreja, the Foundation provides a platform for aspiring designers, students, and amateurs to engage with society and develop solutions for more livable and sustainable urban environments.



The Foundation offers numerous opportunities for students and young professionals, including internships with prestigious organizations in India and abroad, as well as events, workshops, and seminars to facilitate knowledge exchange. Notable initiatives include the 'NASA x CP Kukreja Design Trophy' which encourages students to reimagine India's urban spaces with sustainability in mind. The trophy attracted over 800 entries in its first year and continues to be a popular design competition among students of architecture and design in India and abroad.

Through exhibitions, competitions, scholarships, exchange programs and social media campaigns, the Foundation continuously provides platforms for students and young professionals to showcase their creativity and contribute to the future of design in India. It operates with the belief that design plays a crucial role in shaping the world around us, and therefore, fostering design excellence is essential for sustainable development and societal progress.

Supported By

The Royal Institute of British Architects

The Royal Institute of British Architects (RIBA) is a global professional membership body dedicated to driving excellence in architecture. It serves its members and society by striving to deliver better buildings and places, stronger communities, and a sustainable environment. Inclusivity, ethics, environmental awareness, and collaboration form the foundation of all its work.

RIBA 
Architecture.com

RIBA is a signatory to the United Nations Global Compact (UNGC) and is committed to improving practices to combat modern slavery and human trafficking.

The organisation maintains a zero-tolerance approach to bribery and corruption and provides an Anti-Bribery and Corruption Policy for reference.

Currently, RIBA is implementing several changes across its operations-from properties to staff structure-to build a leaner, more agile, and member-focused organisation.

All the Best !

Don't forget to follow our social media handles!
Visit them by clicking the icons below



www.nasaindia.co